

WALK-IN COLD ROOMS

CATALOGUE



AMPLECOOL 
THE CHILLER MAKER

AMPLECOOL presents the new **COLDROOM**,
Developed to provide

- Designs and quality
- Easy transportation and assembly
- Low price and energy consumption
- Easy maintenance

AMPLECOOL allows storage in any room size,
Ideal for food factories, market, restaurants,
and even private individuals

Panels equipped with PS/PU foam
“ISOWALL” With temperature
range from 15c to -40c

ผนังห้องเย็นทำด้วยฉนวน Isowall
ชนิด PU/PS และสามารถทำอุณหภูมิ
ห้องตั้งแต่ 15c ถึง -40c



	Depth (mm)										HEIGHT 2,03m	
m³	970	1370	1570	1770	1970	2170	2370	2570	2770	2970	3170	3370
1770	2,35	3,52	4,10	4,69	5,27	5,86	6,95	7,03	7,62	8,20	8,79	9,37
2170	2,93	4,40	5,13	5,86	6,59	7,32	8,06	8,79	9,52	10,25	10,98	11,72
2570	-	5,28	6,15	7,03	7,91	8,79	9,67	10,55	11,42	12,30	13,18	14,06
2970	-	6,15	7,18	8,20	9,23	10,25	11,28	12,30	13,33	14,35	15,38	16,40

	Depth (mm)										HEIGHT 2,03m	
m³	970	1370	1570	1770	1970	2170	2370	2570	2770	2970	3170	3370
1770	2,86	2,29	5,00	5,71	6,43	7,14	7,85	8,57	9,28	10,00	10,71	11,42
2170	3,57	5,36	6,25	7,14	8,03	8,92	9,82	10,71	11,60	12,49	13,38	14,28
2570	-	6,43	7,50	8,57	9,64	10,71	11,78	12,85	13,92	14,99	16,06	17,13
2970	-	7,50	8,75	10,00	11,24	12,49	13,74	14,99	16,24	17,49	18,74	19,99

	Depth (mm)										HEIGHT 2,03m	
m³	970	1370	1570	1770	1970	2170	2370	2570	2770	2970	3170	3370
1770	2,49	3,74	4,37	4,98	5,62	6,23	6,87	7,47	8,12	8,72	9,36	9,96
2170	3,12	4,67	5,46	6,23	7,02	7,78	8,58	9,34	10,14	10,90	11,70	12,45
2570	-	5,61	6,56	7,47	8,43	9,34	10,30	11,21	12,17	13,08	14,04	14,94
2970	-	5,54	7,65	8,72	9,84	10,90	12,02	13,08	14,20	15,25	16,38	17,43

	Depth (mm)										HEIGHT 2,03m	
m³	970	1370	1570	1770	1970	2170	2370	2570	2770	2970	3170	3370
1770	3,01	4,51	5,27	6,01	6,77	7,51	8,28	9,01	9,78	10,51	11,28	12,01
2170	3,76	5,67	6,58	7,51	8,46	9,38	10,34	11,26	12,22	13,14	14,10	15,01
2570	-	6,76	7,90	9,01	10,16	11,26	12,41	13,51	14,67	15,76	16,92	18,01
2970	-	7,88	9,22	10,51	11,85	13,14	14,48	15,76	17,11	18,36	19,74	21,02

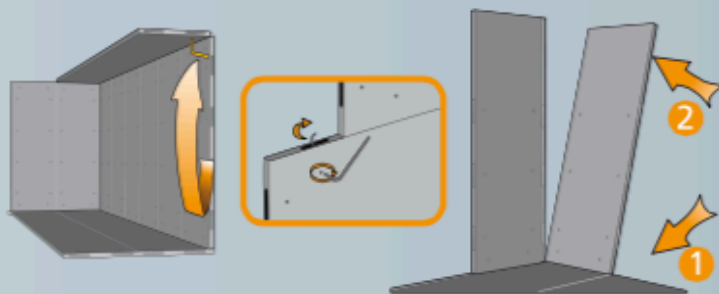
ASSEMBLY

Assembly is done from within the cold room, which is perfect for full usage of room height and where it is necessary to take maximum advantage of the space available.

The modules are assembled with cam locks consisting of an anticorrosion cam and pin, mounted on a highly resistant plastic box, allowing a quick and easy assembly, avoiding the need to do any cutting.

A polyethylene or silicon seal guarantees air tightness.

EASY ASSEMBLY



OPENING SYSTEM

OUTSIDE



INSIDE



HIGH QUALITY MATERIALS

The best materials are used to ensure quality and hygiene, thanks to modern manufacturing techniques meeting the most demanding European standards.

Food-safe grade, galvanised steel cladding is used for the vertical walls and roof.

Floor panels for **negative temperature** cold rooms are reinforced and offer a finishing made of synthetic resin or stainless steel.

Positive temperature cold rooms, without floor, are supplied with a special PVC profile which includes a floor skirting, ensuring simple assembly and a perfect finish.

FULLY EQUIPPED

A cold room can be supplied fully equipped: competitive refrigeration monobloc and aluminum shelving, interior and exterior baseboards, sanitary profiles, pressure balancing valves for negative temperature cold rooms, etc.



- Easy assembly
- Multiple options
- Simple maintenance

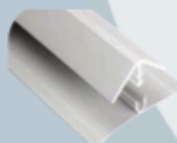
PRESSURE BALANCING VALVE



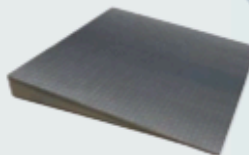
MONOBLOC UNIT



COVING SECTION



RAMPS



AMPLECOOL equipments

Condensing Unit

- Completed with
 - “Bitzer” German Compressors
 - “Copeland” USA Compressors
 - Filter driers, Expansion Valves,
 - Refrigerants parts from Emersons
 - Refrigerant friendly with R410a R404a R22c

Evaporators

- Using High efficiency with low noise fans
- Maximum Airflows
- With Automatic de-frost system by Heaters



AMPLECOOL

THE CHILLER MAKER

**AMPLECOOL CO., LTD.
398/1 Soi, Rungrot,
Prakkasa Rd., Prakkasa Mai,
Muang, Samutprakarn, THAILAND**

**Tel: 02- 703-6298-99
Line id: coachhie**

inquiry@amplecool.com

www.amplecool.com