

# AMPLECOOL

THE CHILLER MAKER



Ample Cool Co., Ltd.

[www.amplecool.com](http://www.amplecool.com)



# WATERCOOLED SCREW CHILLER

Machine Model : WCH 56S1-523D2

Cooling Capacity : 56-800 TON



# SPECIFICATION : WATERCOOLED SCREW CHILLER

WCH	56S1	66S1	83D2	100D2	112D2	132D2	150D2	170D2
Power Supply	V / ph / Hz 380 / 3 / 50							

## PERFORMANCE

Refrigerant		R22	R407c	R22	R407c	R22	R407c	R22	R407c	R22	R407c	R22	R407c	R22	R407c	R22	R407c
Cooling capacity	KW	200.47	196.95	246.19	232.12	295.43	291.91	358.73	351.7	400.94	393.9	492.38	464.24	562.72	527.55	640.09	597.89
Cooling capacity	Tons	57.0	56.0	70.0	66.0	84.0	83.0	102.0	100.0	114.0	112.0	140.0	132.0	160.0	150.0	182.0	170.0
Running Current	KW	43.75	42.04	47.23	51.00	65.66	64.45	65.66	64.45	87.51	84.08	94.46	90.23	108.05	102.01	120.14	113.69

## COMPRESSOR

Compressor Type	BITZER SCREW COMPRESSOR								
Compressor QTY	Unit	1	1	2	2	2	2	2	2
Variable Speed	Steps	0% 25% 50% 75% 100%			0% 12.5% 25% 37.5% 50% 62.5% 75% 87.5% 100%				

## CONDENSER

Condensor	Type	Shell and Tube WATERCOOLED Condenser															
Cooling Flowrate	CBM / HR	38.8	38.1	47.6	44.9	57.2	56.5	69.4	68.0	77.6	76.2	95.3	89.8	108.9	102.1	123.8	115.7
Connection Size	Inch	3"		3"		3" x 2		4" x 2		4" x 2		4" x 2		4" x 2		4" x 2	

## EVAPORATOR

Evaporator	Type	Shell and Tube Tube Evaporator															
Chilled Water	CBM / HR	31.0	30.5	38.1	35.9	45.7	45.2	55.5	54.4	62.1	61.0	76.2	71.9	87.2	81.6	99.1	92.5
Connection Size	Inch	3"		3"		3"		4"		4"		4"		5"		5"	

## SIZE

Weight	Kg	1580	1730	1950	2200	2230	2240	2810	2940
W	cm	900	900	1300	1300	1300	1350	1350	1350
L	cm	2500	2500	3050	3200	3200	3800	3800	3800
H	cm	1750	1750	1600	1650	1650	1700	1750	1750

WCH	213D2	236D2	270D2	322D2	368D2	430D2	488D2	523D2
Power Supply	V / ph / Hz 380 / 3 / 50							

## PERFORMANCE

Refrigerant		R22	R407c	R22	R407c	R22	R407c	R22	R407c	R22	R407c	R22	R407c	R22	R407c	R22	R407c
Cooling capacity	KW	791.32	749.12	872.22	830.01	981.24	949.59	1195.8	1132.5	1382.2	1294.3	1582.6	1512.2	1790.2	1716.3	1934.3	1839.4
Cooling capacity	Tons	225	213.0	248.0	236.0	279.0	270.00	340.0	322.0	393.0	368.0	450.0	430.0	509.0	488.0	550.0	523.0
Running Current	KW	149.84	142.89	163.64	156.89	188.61	178.24	221.54	212.48	247.72	236.65	283.97	270.88	319.22	305.12	345.40	340.37

## COMPRESSOR

Compressor Type	BITZER SCREW COMPRESSOR								
Compressor QTY	Unit	2	2	2	2	2	2	2	2
Variable Speed	Steps	0% 12.5% 25% 37.5% 50% 62.5% 75% 87.5% 100%							

## CONDENSER

Condensor	Type	Shell and Tube WATERCOOLED Condenser															
Cooling Flowrate	CBM / HR	153.1	144.9	168.7	160.6	189.8	183.7	231.3	219.1	267.4	250.4	306.2	292.6	346.3	332.0	374.2	355.8
Connection Size	Inch	4" x 2		4" x 2		5" x 2		5" x 2		5" x 2		6" x 2		6" x 2		6" x 2	

## EVAPORATOR

Evaporator	Type	Shell and Tube Tube Evaporator															
Chilled Water	CBM / HR	122.5	115.9	135.0	128.5	151.9	147.0	185.1	175.3	213.9	200.3	244.9	234.1	277.1	265.6	299.4	284.7
Connection Size	Inch	5"		5"		5"		6"		8		8"		8"		8"	

## SIZE

Weight	Kg	3400	3600	3910	4500	4700	4850	4890	5000
W	cm	1700	1700	1700	1700	1700	1700	1700	1700
L	cm	3800	3800	4450	4450	4450	4800	5100	5100
H	cm	1700	1700	1800	2350	2350	2350	2450	2450





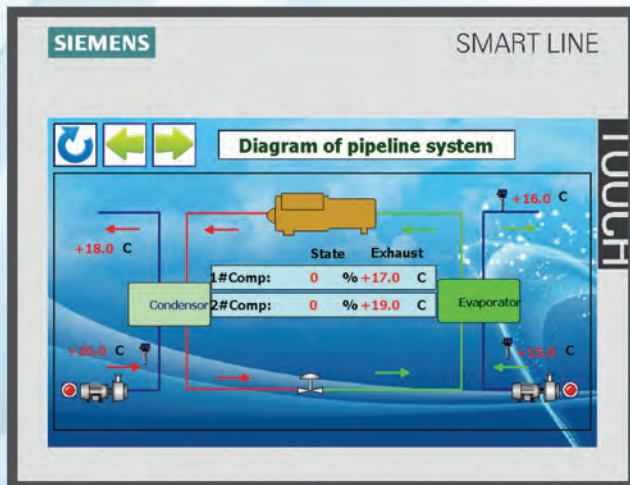
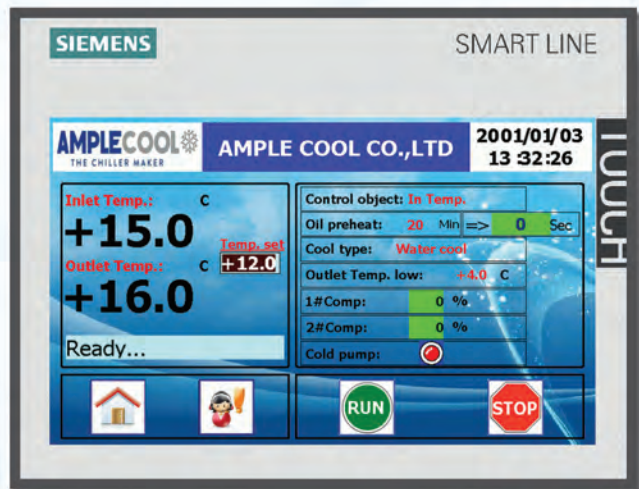


# SMART CONTROL SYSTEM

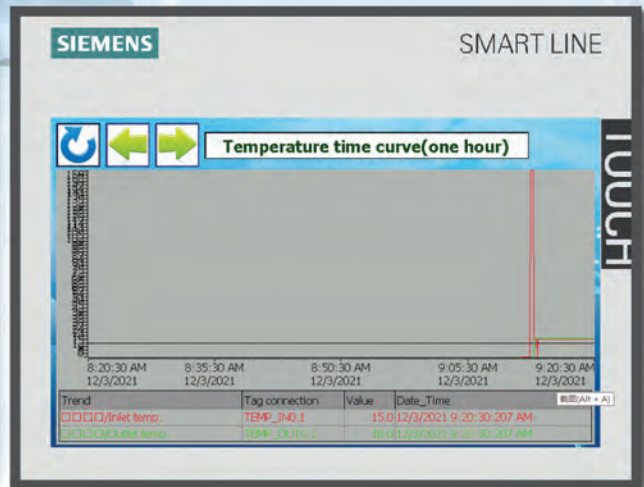
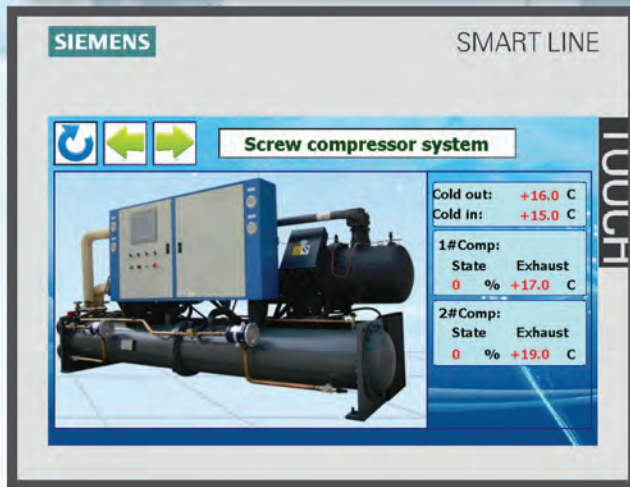


The “Siemens” Monitor indicates all details easy to use and operate. With Inlet / Outlet water temperature, Variable Speed drive percentage, Set-point, and many more. “Just 1 press to start the chiller”

AMPLECOOL Smart monitor High class Touch Screen Monitor by “Siemens” with smartest user-friendly interface program that allow full control of the chiller system. RS485 Modbus communication system is well equipped with this smart monitor.



Smart Data: Allow user to get the overall status of the chiller machine. All details and reports are all available on screen. Including Historical Alarms, temperatures graphs, and many more.





# REFERENCE CUSTOMER





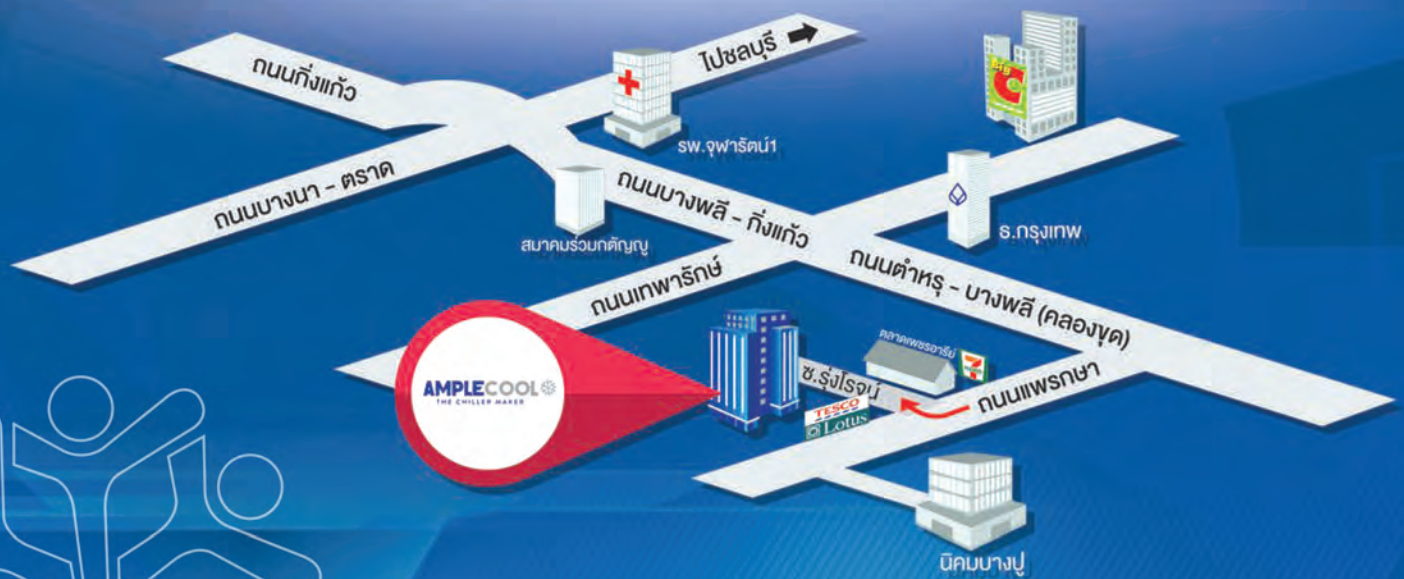
30 years of

# COMBINED EXPERIENCE

We have the know-how you need.







# AMPLECOOL

## THE CHILLER MAKER

**Ample Cool Co., Ltd.**

398/1 Soi Rungrot Prakkasa Rd., Prakkasa Mai, Muang, Samutprakarn 10280 Thailand

☎ : 096-4783706, 096-4783715, 096-4783724, 081-4992217

☎ : 02-7036964

✉ : inquiry@amplecool.com

LINE : @amplecool

🌐 : www.amplecool.com

