

AMPLECOOL

THE CHILLER MAKER



Ample Cool Co., Ltd.

www.amplecool.com

AIRCOOL SCREW CHILLER

Machine Model : ACH 61S1-213T3

Cooling Capacity : 61-213 TON

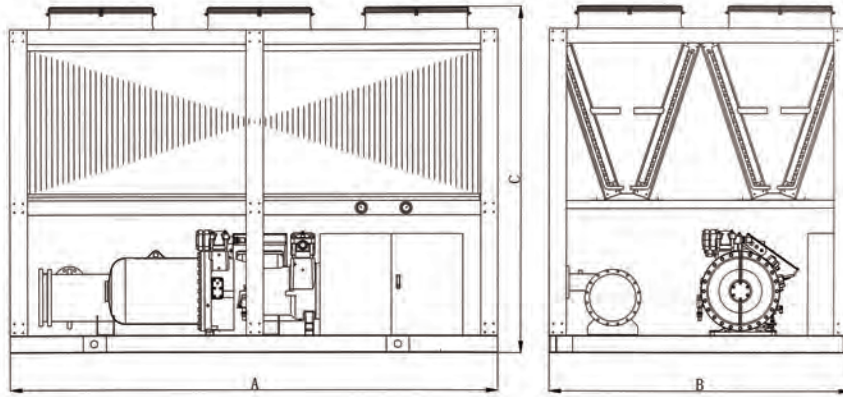


SPECIFICATION : AIRCOOL SCREW CHILLER

ACH		61S1	71S1	80D2	93D2	106D2	123D2	143D2	153D2								
Power Supply	V/ph/Hz	380 / 3 / 50															
PERFORMANCE																	
Refrigerant		R22	R407c	R22	R407c	R22	R407c	R22	R407c	R22	R407c	R22	R407c	R22	R407c	R22	R407c
Cooling capacity	KW	232.22	214.54	253.22	249.71	284.88	281.36	330.6	327.08	383.35	372.8	464.24	432.59	509.96	502.93	552.17	538.1
Cooling capacity	Tons	66	61	72	71	81	80	94	93	109	106	132	123	145	143	157	153
Running Current	KW	82.57	79.42	91.57	88.80	104.60	103.46	120.46	116.05	133.29	128.64	165.13	158.84	183.13	177.60	194.21	191.82
COMPRESSOR																	
Compressor Type		BITZER SCREW COMPRESSOR															
Compressor QTY	Unit	1	1	2	2	2	2	2	2								
Variable Speed	Steps	0% 25% 50% 75% 100%				0% 25% 37.5% 50% 62.5% 75% 87.5% 100%											
CONDENSER																	
Condenser	Type	AIR - COOLED AXIAL FANS (Aluminium blue Fins and Copper Tube)															
Air Flow	x1000M3H	148.8	148.8	198.4	198.4	198.4	198.4	297.6	297.6								
No. Of Fan	PC	6	6	8	8	8	8	12	12								
EVAPORATOR																	
Evaporator	Type	35.9	33.2	39.2	38.6	44.1	43.5	51.2	50.6	59.3	57.7	71.9	67.0	78.9	77.8	85.5	83.3
Chilled Water	CBM / HR	44.9	41.5	49.0	48.3	55.1	54.4	64.0	63.3	74.2	72.1	89.8	83.7	98.7	97.3	106.8	104.1
Connection Size	Inch	4"	4"	4"	4"	4"	4"	4"	4" x 2	4" x 2	4" x 2	4" x 2	4" x 2	4" x 2	4" x 2	4" x 2	4" x 2
SIZE																	
Weight	Kg	2620	2700	3100	3200	3320	2650 x 2	2700 x 2	2775 x 2								
L	mm	4500	4500	4500	4800	4800	4500 x 2	4500 x 2	4500 x 2								
W	mm	2100	2100	2100	2100	2100	2100	2100	2100								
H	mm	2300	2300	2350	2350	2350	2350	2350	2350								

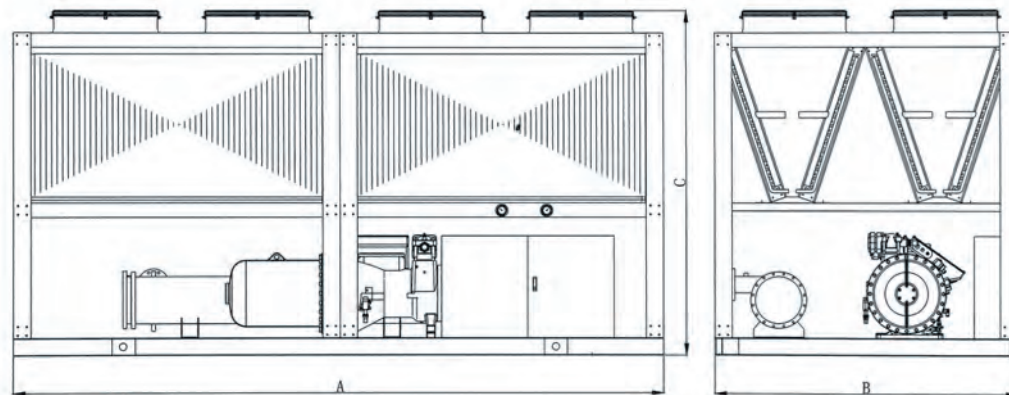
ACH		162D2	175D2	202D2	213D2		
Power Supply	V/ph/Hz	380 / 3 / 50					
PERFORMANCE							
Refrigerant		R22	R407c	R22	R407c	R22	R407c
Cooling capacity	KW	580.3	569.75	626.03	615.47	738.57	710.43
Cooling capacity	Tons	165	162	178	175	210	202
Running Current	KW	204.03	198.24	217.25	214.48	254.63	238.02
COMPRESSOR							
Compressor Type		BITZER SCREW COMPRESSOR					
Compressor QTY	Unit	2	2	2	3		
Variable Speed	Steps	0% 25% 37.5% 50% 62.5% 75% 87.5% 100%					
CONDENSER							
Condenser	Type	AIR - COOLED AXIAL FANS (Aluminium blue Fins and Copper Tube)					
Air Flow	x1000M3N	396.8	396.8	396.8	595.2		
No. Of Fan	PC	16	16	16	24		
EVAPORATOR							
Evaporator	Type	89.8	88.2	96.9	95.3	114.3	110.0
Chilled Water	CBM / HR	112.3	110.2	121.1	119.1	142.9	137.4
Connection Size	Inch	4" x 2	4" x 2	4" x 2	4" x 2	4" x 2	4" x 2
SIZE							
Weight	Kg	2800 x 2	3200 x 2	3320 x 2	3320 x 3		
L	mm	4500 x 2	4800 x 2	4800 x 2	4500 x 3		
W	mm	2100	2100	2100	2100		
H	mm	2350	2400	2400	2400		

EXTERNAL DIMENSIONS



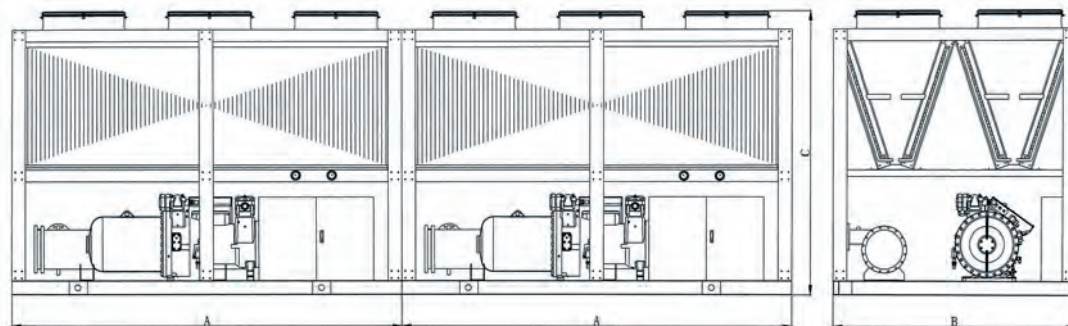
MODEL

ACH 61S1 - 71S1



MODEL

ACH 80D2 - 106D2



MODEL

ACH 123D2 - 202D2

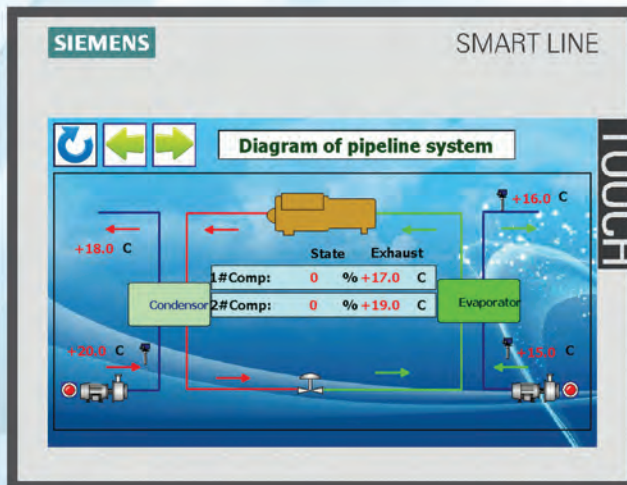
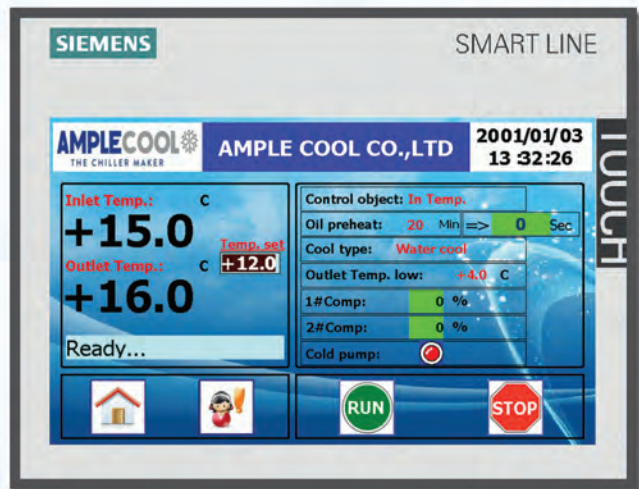


SMART CONTROL SYSTEM

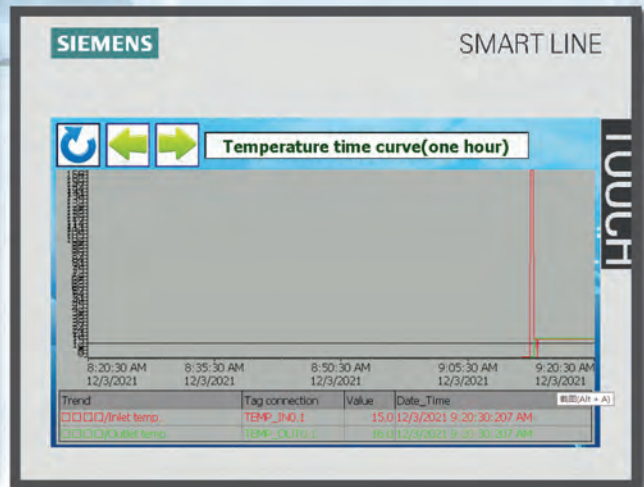
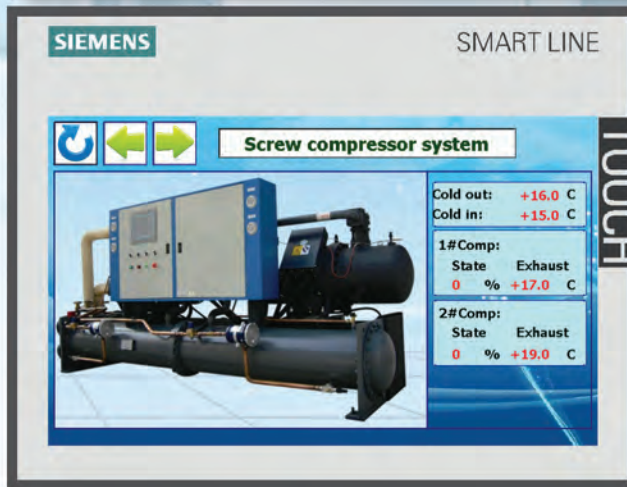


The “Siemens” Monitor indicates all details easy to use and operate. With Inlet / Outlet water temperature, Variable Speed drive percentage, Set-point, and many more. “Just 1 press to start the chiller”

AMPLECOOL Smart monitor High class Touch Screen Monitor by “Siemens” with smartest user-friendly interface program that allow full control of the chiller system. RS485 Modbus communication system is well equipped with this smart monitor.



Smart Data: Allow user to get the overall status of the chiller machine. All details and reports are all available on screen. Including Historical Alarms, temperatures graphs, and many more.



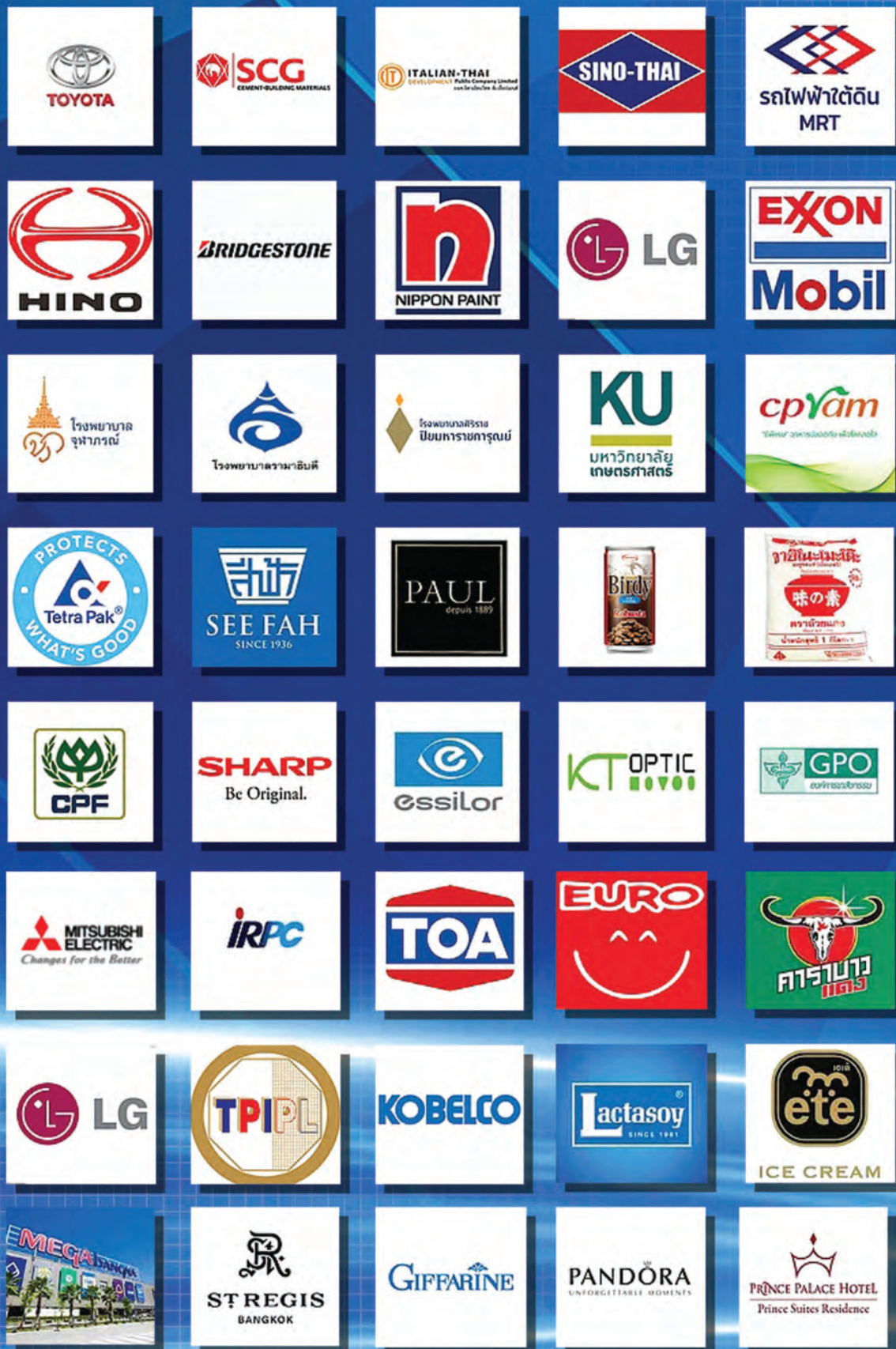
REFERENCE CUSTOMER

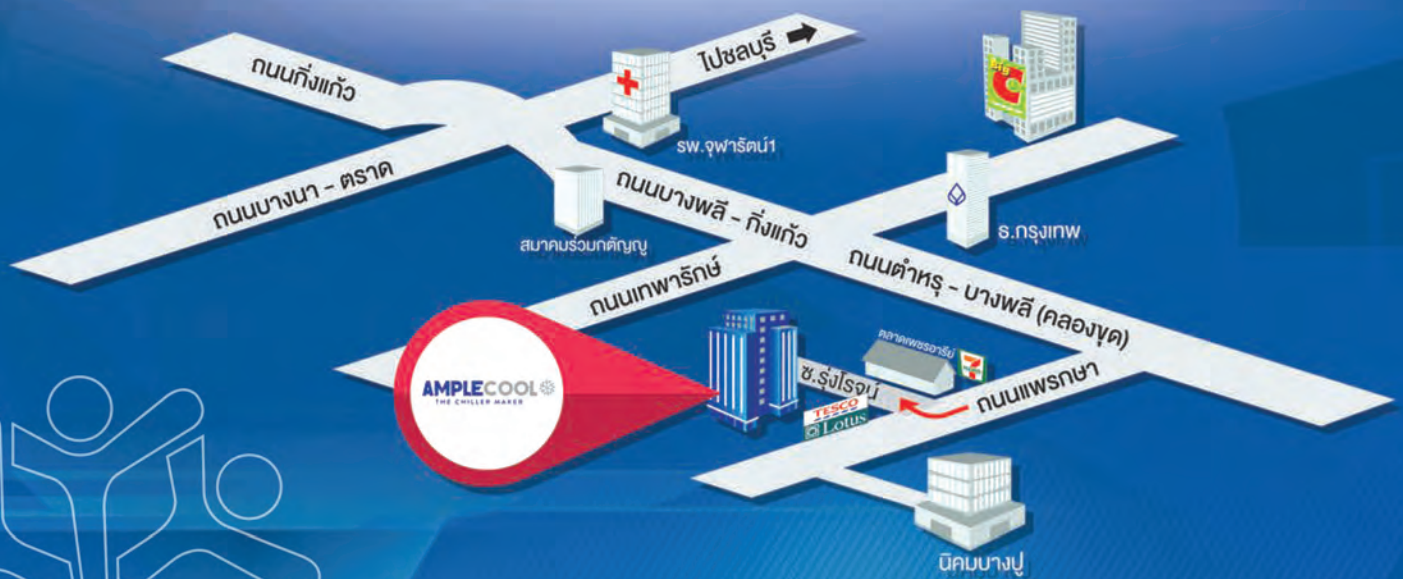


30 years of

COMBINED EXPERIENCE

We have the know-how you need.





AMPLECOOL

THE CHILLER MAKER

Ample Cool Co., Ltd.

398/1 Soi Rungrot Prakkasa Rd., Prakkasa Mai, Muang, Samutprakarn 10280 Thailand

☎ : 096-4783706, 096-4783715, 096-4783724, 081-4992217

☎ : 02-7036964

✉ : inquiry@amplecool.com

LINE : @amplecool

🌐 : www.amplecool.com

